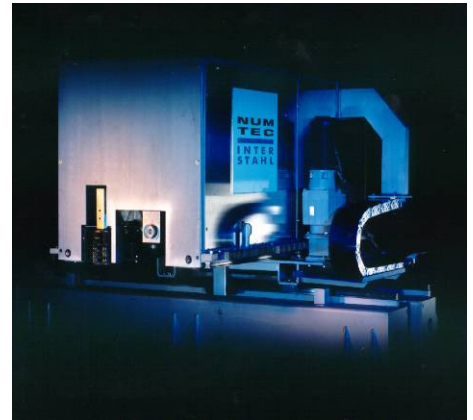


CHARACTER SIZE FROM 60 TO 150 MM

LONG DURABILITY OF MARKING

LARGE, EASILY LEGIBLE CHARACTERS



Hot Spray Marking Machine

TECHNICAL CHARACTERISTICS

Completely redesigned marking heads for high performance even in the harsh steel plant environment. Equipment manufactured using standardised modules, resulting in high reliability and low maintenance of equipment. Forced air cooling to maintain low ambient temperatures within marking unit. System based on conventional electric arc spraying.

ECONOMICAL AND TECHNICAL BENEFITS

Variable character size, only electrical and pneumatic media supply. Low operating costs with standard welding wires up to 900°C. Marking of products also possible at higher temperatures with special filling wire. Large characters, highly visible marks. Durability of at least a half year outdoors.



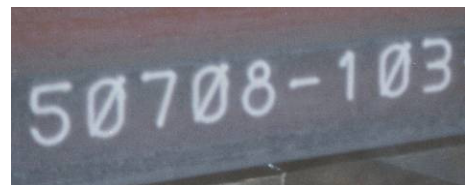
Marking Head

TECHNICAL DESIGN

Machine frame is a robust fabricated construction, linear rails, safety devices for marking head. Electrical drives with servo motors via gear rack and pinion and cable drag chains. Writing movement of marking head with linear x and y axes driven by servo motors. Control systems (standard Siemens S7 PLC) with standard interfaces to plant equipment and fault diagnosis system.

OPTIONS

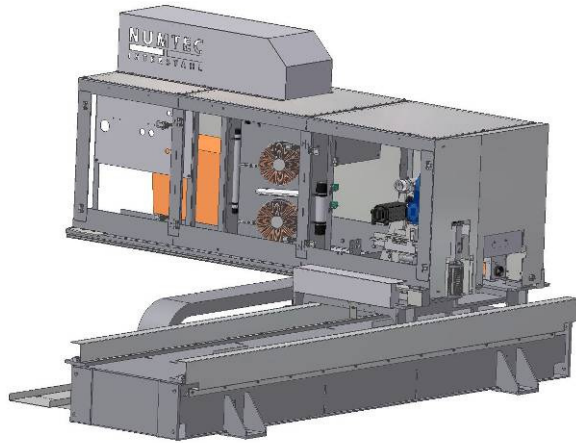
- Other control systems (Allen Bradley, etc.)



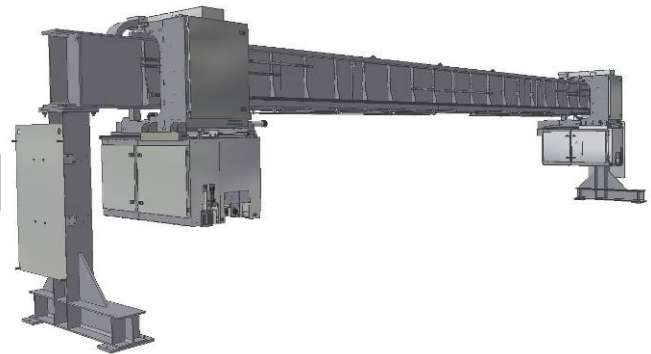
HS Marking

TECHNICAL DATA	
Usual applications	Slabs and blooms
Temperature range of product	20 °C – 1,200 °C
Type of mark	White or yellow
MARKING DATA	
Character size	60 – 150 mm
Number of lines	1 or 2, depending on character size
Typical time of marking	Approx. 60 sec for 10 characters at 100 mm size
ELECTRICAL	
Mains supply	3 x 400 V, 50 Hz (other voltages also possible)
Power consumption	Approx. 13 kVA
Control voltage	24 VDC
PNEUMATIC	
Compressed air or nitrogen	Filtered and drained
Pressure	Min. 4 bar
Consumption	Max. 0.2 Nm ³ /min
CONSUMABLES	
Welding wire	Al, AlBz, special wire

MACHINE TYPES



Hot Spray Marking Machine Floor Type



Hot Spray Marking Machine Bridge Type