

CHARACTER SIZE FROM 9 TO 48 MM

DIFFERENT COLOURS AVAILABLE

HIGH-SPEED MARKING

TECHNICAL CHARACTERISTICS

Reliable, high-quality paint marking system which can be used for marking both moving and stationary products. To achieve high availability, we use a tried-and-tested paint control and automatic cleaning system.

ECONOMICAL AND TECHNICAL BENEFITS

The durable high-quality mark is a strong marketing tool, “a high-quality product with a high-quality mark”. Offers a significant visual improvement on ink system marking. Better identity of your product helps protect you against invalid customer complaints. Low paint consumption.

TECHNICAL DESIGN

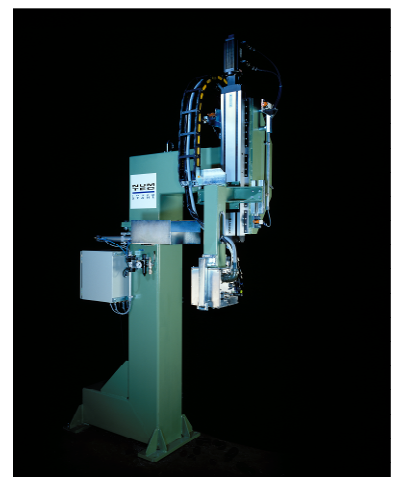
Equipment manufactured using either low-maintenance linear rails (external marking) or industrial robots (combined internal and external marking); electrical drives with servo motors, control systems (standard Siemens S7 PLC) with standard interfaces to steel plant equipment, fault diagnosis systems, synchronisation with product speed via an external encoder.

OPTIONS

- Automatic character height for inside and outside marking on pipes
- Other control systems (Allen Bradley, etc.)



Paint Jet Marker



Paint Jet Marker

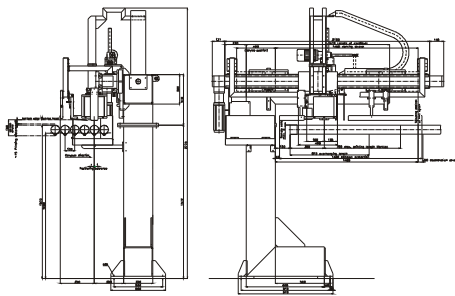


PJ Marking

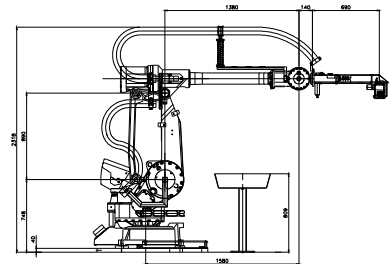
TECHNICAL DATA

Usual applications	Mill products (sheets, tubes, pipes, profiles and beams)
Temperature range of product	Up to 100°C
Type of mark	Paint mark (white, black, red or blue)
MARKING DATA	
Character size	9 – 48 mm
Special functions	Double line, customer logo, inverse printing
Marking speed (depending on character height)	Max. 4.5 m/sec
ELECTRICAL	
Mains supply	3 x 400 V, 50 Hz (other voltages possible)
Power consumption	Approx. 10 kVA
Control voltage	24 VDC
MEDIA	
Compressed air	Min. 4 bar, max. 0.5 Nm ³ /min
CONSUMABLES	
Paint	PSA type (based on ethyl alcohol)
Colour of paint	White, black, red or blue
Cleaning fluid	Remover A (based on ethyl alcohol)

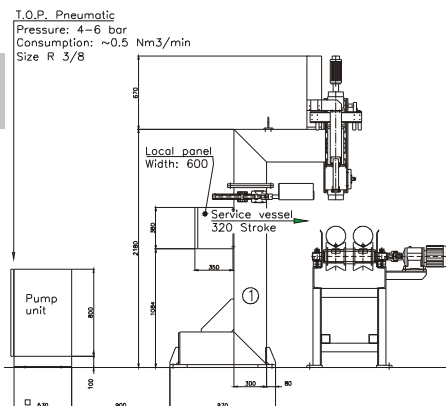
MACHINE TYPES



Paint Jet Marker In-Line Version
(For marking of stopped products)



Paint Jet Marker Robot Version
(Internal and external marking of pipes)



Paint Jet Marker Conveyor Version
(For marking moving products)